

Site Name : Calleta El Maiten permanent sta	Author : Morvan + Decamps
Site Code : <u>E</u> <u>M</u> <u>A</u> <u>T</u>	date : year 2007 month 05 day 28
Coordinates : Lat. : S 31° 08' 48.6" Lon. : W 071° 39' 45.0" Alt. : 14 m	

DESCRIPTION

North Chili IV region, district of Limari, on the south side of Calleta el Maiten.

MONUMENTATION

Geodyssea type marker, scealed in outcrop + rotating adaptator, height 28 mm.

ACCESS

From Route 5, exit at returno between km 311 and 312. take the track (D614) that follows route 5 for 1 km and then points NW to the Ocean. Reach Calleta El Maiten after 8 km and 10-15 minutes. Go into the village. The outcrop is on the South side of the cove, just aside the road (left side). We ask to the professor (Alva Cortez, 94247502) to put the installation.Accessible all year round with a standard car.

ADDITIONAL INFORMATION

Operational since 08/05/2007 (day 128 of year 2007)

Charger : /

Regulators : Morningstar 12v 4.5A * 4.

Battery : Cellyte 12v 100 Ah * 2 (parallel plug).

Antenna cable Trimble 10 meters, small section.

Power connection : Solar pannels 20w * 4 (parallel plug).

Receiver Configuration

Identity EMAT
SN4635120808

Firmware 1.1-3 28 Apr 2005

Antenna Type: 86 = Zephyr Geodetic
SN60177886 , "41249-00 DC 4644"
Height: 0.028 meters
Height Method: Bottom of antenna mount

Clock Steering Enabled

Multipath Reduction Enabled

L2C Tracking Disabled

Elevation Mask 15°

PDOP Mask 7

**Pulse Per Second
Output** Disabled

Reference Frequency Using Internal Source
External source NOT detected

GPS Satellites Disabled: None
IgnoreHealth: None

WAAS Disabled
Enabled Satellites: EGNOS-AOR-E, prn121,
WAAS-AOR-W, prn123, prn124, prn125, prn126,
prn127, prn128, MSAS-1, prn130, EGNOS-IOR,
prn132, prn133, WAAS-POR, prn135, prn136,
MSAS-2, prn138

Reference Station RTCM Station ID: 0
Binex Station ID:
CMR Station ID: 0
CMR Station Name: EMAT
Description: Caleta El Maiten - IV region - Chili
Position:
Lat: 31°08'48.60000" S X: 1718921.1 m
Lon: 071°39'45.00000" W Y: -5186197.6 m
Height: 14.000 meters Z: -3279846.1 m

Data Logging Enabled Sessions:

1s: Continuous 1440 minute sessions.

30s: Continuous 1440 minute sessions.

Power Saving Mode: Disabled.

Reserved Space: Not AutoDeleting.

AutoDelete Pools:

y-pool	650 Mbytes	AutoDeleting.
z-pool	210 Mbytes	AutoDeleting.

Ethernet MAC Address: 00:60:35:03:38:14

IP Address: 129.199.70.93 (static)

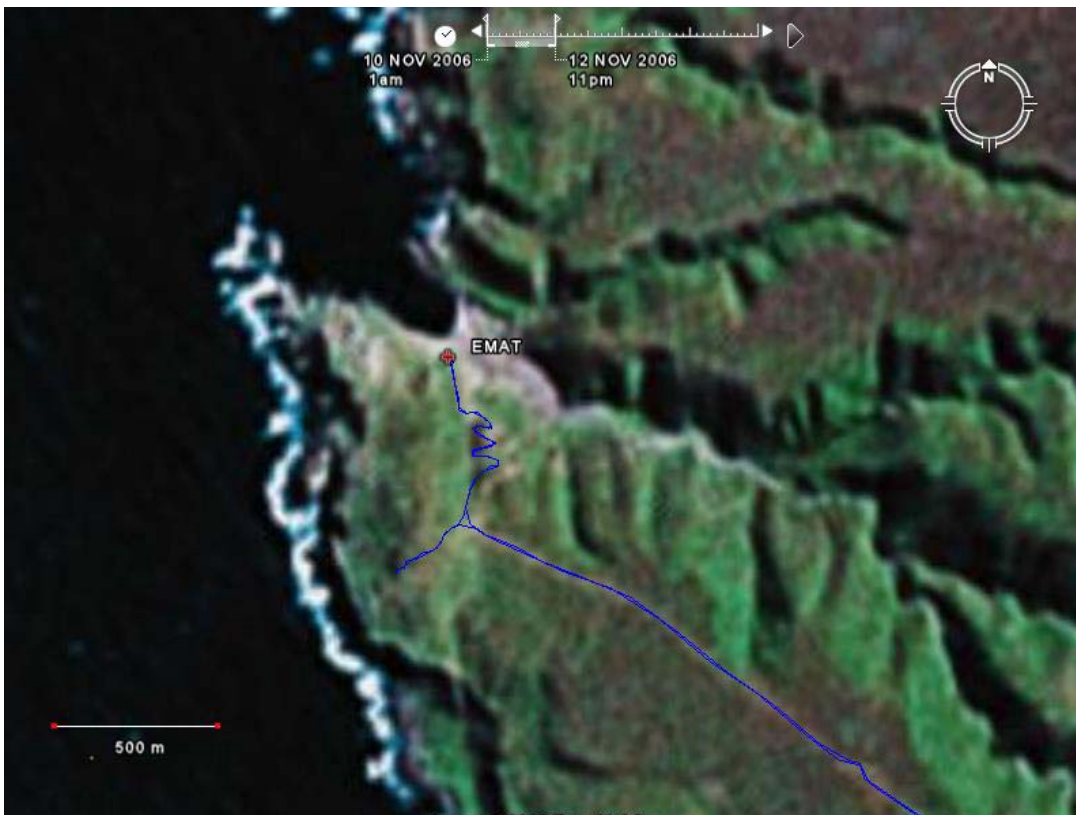
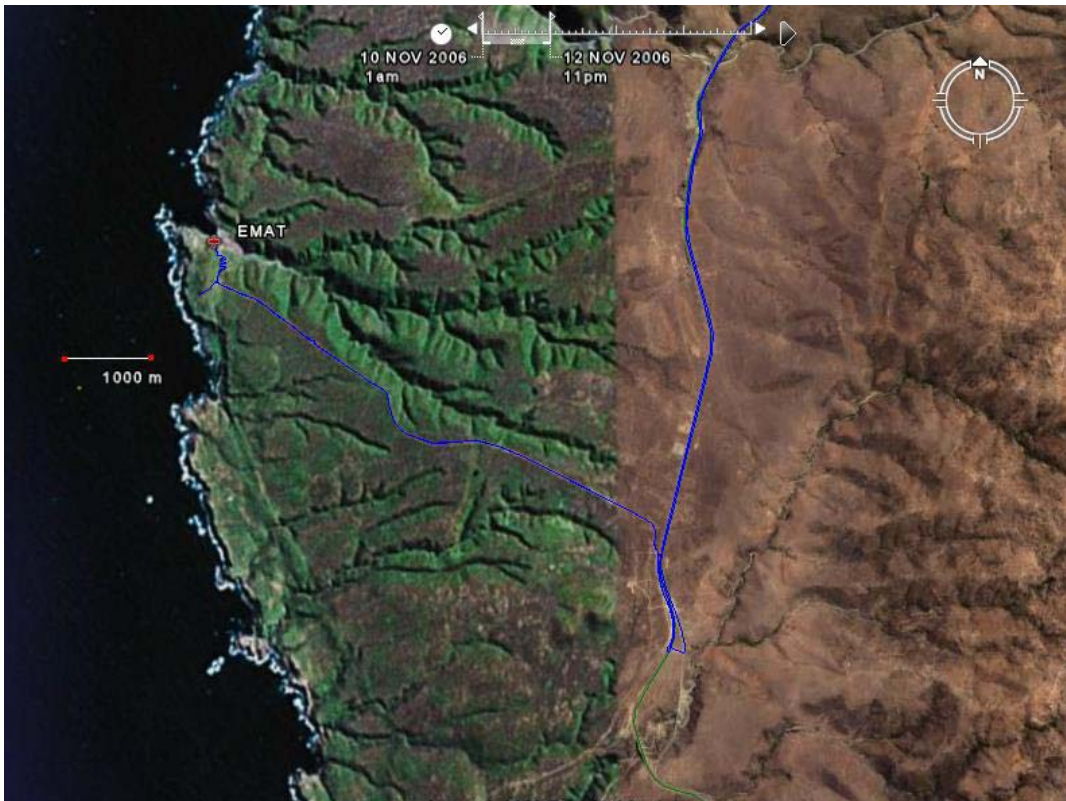
Netmask: 255.255.0.0

Gateway : 129.199.70.254

IP Filtering Disabled

Shutdown Voltage 10.68 Volts

ACCESS and SITE SKETCH MAP





Antenna place



View of the calleta from the receiver place

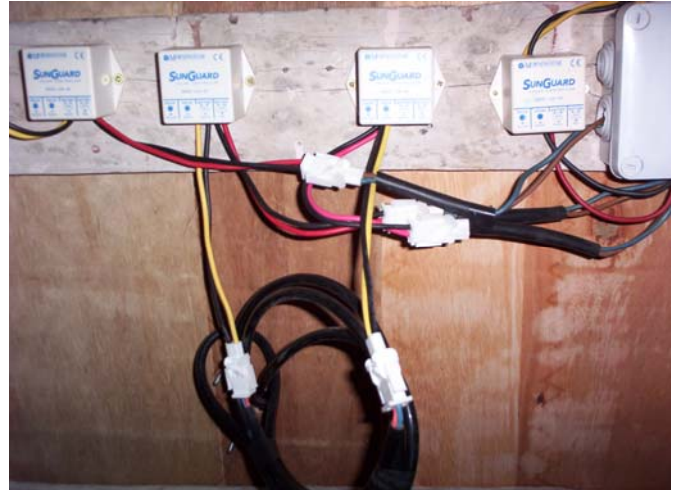


Metalic box to protect the receiver and batteries.
Need a key to open the locker on the box.





4 solar pannels 20w



With their regulators (12 v, 4.5 A)



Protection of installation

INFORMATIONS

May 2007

Installation is ok but we didn't have enough time to test the alimentation system with batteries and solar panels, normally it should be ok. It's possible that the next time there is a small house near the installation. A man talk them about that during the installation, but normally there is no problem.

To do next time

- . To check alimentation system
- . To give a key of locker of the box to the professor, to talk with her about Tsunami risk for people in the caleta.
- . To see technical solution with Carlos Aranda (caranda@dgf.uchile.cl) and Mario Perez mperez@gorecoquimbo.cl) to transfer data at DGF in Santiago.
- . To enter xyz position in receiver configuration