

Site Name : Université La Serena - Perma	Author : Morvan
Site Code : <u>L</u> <u>S</u> <u>C</u> <u>H</u>	date : year 2006 month 11 day 20
Coordinates : Lat. : S 29° 54' 29.52250" Lon. : W 071° 14' 45.78420" Alt. : 77.463 m	

DESCRIPTION

North Chile IV region, district of Limari, University of la Serena. On the roof of CETECFI building (Moderno Centro Tecnológico para la facultad de ingeniería).

MONUMENTATION

The station is on the roof of the CETECFI building of the University.
 Brass 12 cm rod (Delmont type) sealed in concrete + brass rotating adaptor made at ENS (10/2006), height 44 mm (+3 from stainless steel Chilean type used for campaigns).

ACCESS

From Ovalle road 5, direction to la Serena to the University campus Ignacio Domeyko (Benavente 920), and go to the CETECFI. Contact Gustavo ANGEL (gangel@userena.cl, 051334824), Adrian ELORZA (aelorza@cetecfiuls.cl, 051334825), in charge of informatic.

ADDITIONAL INFORMATION

Operational since 20/11/2006 (day 324 of year 2006)

Charger : Mascot type 9840 5 Ampère.

Battery : Delphy Freedom 40 Ah.

Antenna cable Trimble 30meters, big section.

Dual power connection : A = 220v, B = 12v battery.

Receiver configuration

Identity LSCH
SN4625209664

Firmware 1.1-3 28 Apr 2005

Antenna Type: 86 = Zephyr Geodetic
SN60142249 , "41249-00 DC 4614"
Height: 0.000 meters
Height Method: Bottom of antenna mount

Clock Steering Enabled

Multipath Reduction Enabled

L2C Tracking Disabled

Elevation Mask 15°

PDOP Mask 7

**Pulse Per Second
Output** Disabled

Reference Frequency Using Internal Source
External source NOT detected

GPS Satellites Disabled: None
IgnoreHealth: None

WAAS Disabled
Enabled Satellites: EGNOS-AOR-E, prn121,
WAAS-AOR-W, prn123, prn124, prn125, prn126,
prn127, prn128, MSAS-1, prn130, EGNOS-IOR,
prn132, prn133, WAAS-POR, prn135, prn136,
MSAS-2, prn138

Reference Station RTCM Station ID: 0
Binex Station ID:
CMR Station ID: 0
CMR Station Name: LSCH
Description: University la Serena - IV region - Chili
Position:
Lat: 29°54'29.52250" S X: 1779017.4 m
Lon: 071°14'45.78420" W Y: -5239626.3 m
Height: 77.463 meters Z: -3161595.3 m

Data Logging Enabled Sessions:
1s: Continuous 1440 minute sessions.
30s: Continuous 1440 minute sessions.

Power Saving Mode: Disabled.
Reserved Space: Not AutoDeleting.
AutoDelete Pools:

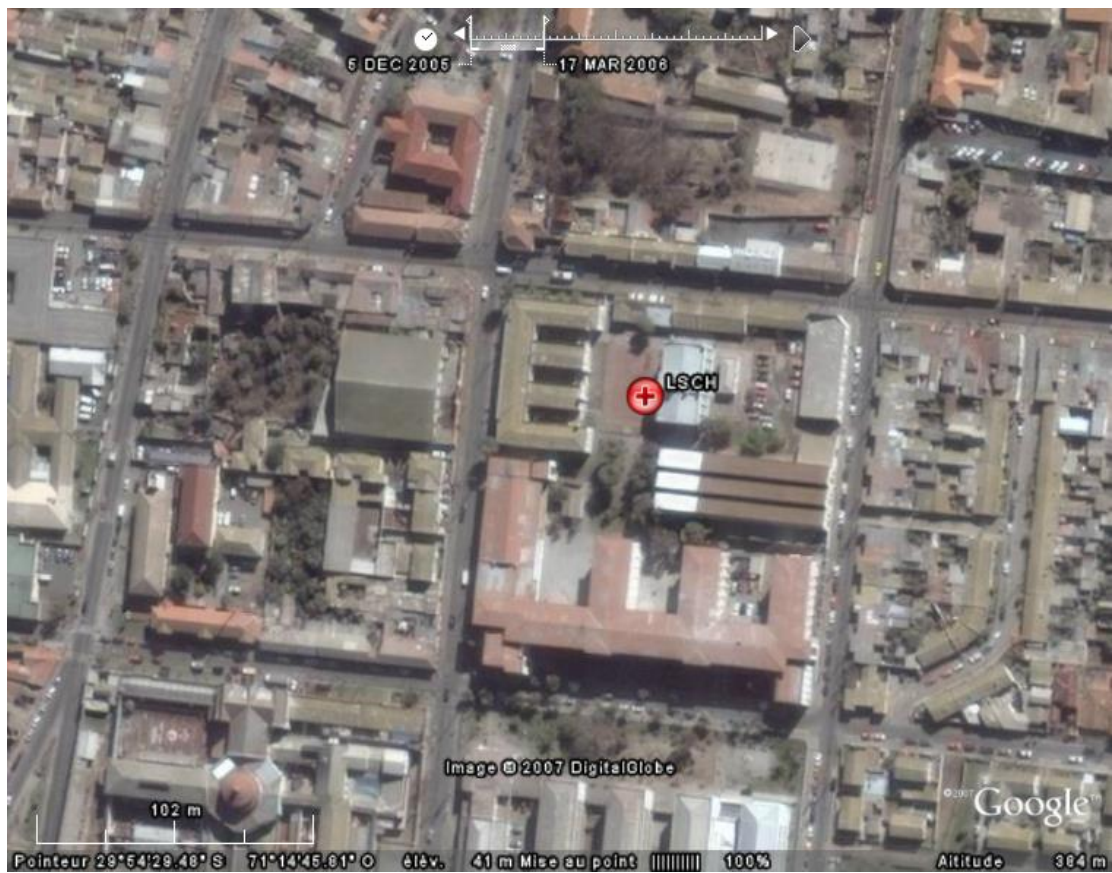
y-pool	650 Mbytes	AutoDeleting.
z-pool	200 Mbytes	AutoDeleting.

Ethernet MAC Address: 00:60:35:03:3E:47
IP Address: 172.16.1.10 (static)
Netmask: 255.255.255.0
Gateway : 172.16.1.2

IP Filtering Disabled

Shutdown Voltage 10.68 Volts

ACCESS and SITE SKETCH MAP





CETECFI Building.



Antenna on the CETECFI Building roof.



Antenna on the CETECFI Building roof.



Receiver in plastic box

INFORMATIONS

May 2007

We got datas and tried with Ismael (DGF,) and Adrian to view the receiver on the network from the DGF. It works for http and ftp page. To access to the receiver from DGF : <http://gps.cetecfiuls.cl> (or <http://gps.cetecfiuls.cl/perl-scripts/NetRS.cgi>) or <ftp://gps@ftp.cetecfiuls.cl> with psswd : cetecfigps).

To do next time

- . To check if ftp access is ok
- . To enter antenna height and xyz position in receiver configuration.