

Station GPS permanente
IPG Paris

DGF Uchile

UCNA Iquique

Site Name : Mejillones	Author : Ruegg / deChabali
Site Code : PMEJ	date installation: 2003 month 11 day 29
Coordinates : Lat. : -23.10082271 Lon. : -70.44837951 Alt. : 48.896	

DESCRIPTION

Permanent GPS station , city of Mejillones, Chile region 2
Centro Cultural, Municipalidad de Mejillones.

MONUMENTATION

Inox rod (Delmont type) scealed in concrete at the top of the wall on the building
"Centro Cultural"

Historic

PMEJ: Date Installation: 29-NOV-2003
Receptor Ashtech ZX sn: ZR 220023 054, antena : ASHTECH GEODETIC IV n° 892

MEJO: Tied point located 5170 m East of the city of Mejillones at the top of the cliff, near the Morro de Mejillones. Installed in 1995 and remeasured 1996, 2000 and 2003.

PRACTICAL INFORMATIONS

state property	YES	NO	Building of Cultural Centre, Municipality of Mejillones
private property		NO	
access restricted		NO	City office working hours
telephone nearby	YES	NO	See to the Cultural Center Office
Electric power nearby	YES	NO	
equipment storage available		NO	
possibility of leaving the equipment without watching	YES	NO	

person in charge	YES	NO	Raul Nabrakis, Municipalidad, 622323
person to contact	YES	NO	Internet contact: Luis Oorio 90988382 (cell) 55- 557309 (informatica, Municipalidad)

COORDINATES

PMEJ Coord. geocentriques :

PXYZ 1 PMEJ 1964357.665 -5531332.332 -2487012.643
PXYZ 1 MEJ0 1959629.898 -5533393.878 -2487351.828

PMEJ_cont coordonnees geographiques

PDC 1 PMEJ -70.44837951 -23.10082271 48.896
PDC 1 MEJ0 -70.49859821 -23.10235456 515.647

MEJ0_PMEJ 2003.335X X 4727.7631 +- 0.0025 Y 2061.5407 +- 0.0065 Z
339.1842 +- 0.0031 L 5168.8238 +- 0.0015 Correlations (X-Y,X-Z,Y-Z) =
-0.83248 -0.82834 0.92176
MEJ0_PMEJ 2003.335X N 168.7634 +- 0.0011 E 5144.7510 +- 0.0013 U
-468.8238 +- 0.0074 L 5168.8238 +- 0.0015 Correlations (N-E,N-U,E-U)
= -0.12774 -0.02311 -0.06670

12	MEJ0	PMEJ	4727.7631	0.003	0	0	03-335	Gamit	onewca.335
13	MEJ0	PMEJ	2061.5407	0.007	0	0	03-335		
14	MEJ0	PMEJ	339.1842	0.003	0	0	03-335		

Sheet log type IGS :

PMEJ _ Site Information Form __ International GPS Service for Geodynamics

0. Form

Prepared by (full name) : J.C. Ruegg , J.B. de Chabaliere

Date Prepared : 31-DEC-2003

Report Type : UPDATE

1. Site Identification of the GPS Monument

Site Name : Mejillones tracking station

Four Character ID : PMEJ

Monument Inscription :

IERS DOMES Number :

CDP Number : (XXXX)

Date Installed : 29-NOV-2003

Geologic Characteristic : GRAVEL/SAND

Bedrock Type : SEDIMENTARY

Bedrock Condition : on the top of a 3 level building

Fracture Spacing :

Notes : installed on the top of Cultural Center of the Mejillones city

60 km North of Antofagasta (Chile), A steel mark type IPGP is sealed on the top of a ventilation shaft

No auxilliary point ; there is other point 5 km W sealed on a good rock

Additional Information : Geological Province: Andean Cordillera

: Local Geology: building constructed on sand

: Geological information from xxx

2. Site Location Information

City or Town : Mejillones
Country : Chile
Tectonic Plate : South American but in the convergence area of Nazca/ SOAM plates
Approximate Position
X coordinate (m) : 1964357.665
Y coordinate (m) : -5531332.33
Z coordinate (m) : -2487012.65
Latitude (deg) : -23.10080
Longitude (deg) : -70.44838
Elevation (m) : 48.90

Additional Information : Latitude, Longitude and Elevation derived from Gamit calculation

3. GPS Receiver Information

3.1 Receiver Type : ASHTECH Xtreme / UZ-12
Serial Number : ZR 220023 054
Firmware Version : 7.xxx ZB00 0A13
Date Installed : 29-NOV-2003
Date Removed : (dd-MMM-yyyy hh:mm UT)
Additional Information : (multiple lines)

3.2 Receiver Type :
Serial Number :
Firmware Version : 0
Date Installed : Date Removed : (dd-MMM-yyyy hh:mm UT)

4. GPS Antenna Information

4.1 Antenna Type : ASHTECH GEODETIC IV
Serial Number : 892
Antenna Height (m) : 0.007
Antenna Reference Point : ARP = dhpad
Degree Offset from North : 0.0
Antenna Radome Type :
Date Installed : 29-NOV-2003 hh:mm UT
Date Removed : (dd-MMM-yyyy hh:mm UT)

4.2 Antenna Type :
Serial Number :
Antenna Height (m) :
Antenna Reference Point :
Degree Offset from North :
Antenna Radome Type :
Date Installed : hh:mm UT
Date Removed :

5. Local Site Ties : NO local ties

5.1 Monument Name :
Site Ref CDP Number :
Site Ref Domes Number :

Differential Components from GPS Mark to Site Reference (ITRS)

dx (m) :
dy (m) :
dz (m) :
Accuracy (mm) : (mm)
Date Measured : (dd-MMM-yyyy hh:mm UT)
Additional Information :

6. Frequency Standard : NO

7. Collocation Information

7.x Instrumentation Type : No

Status : (PERMANENT/MOBILE)

Effective Dates : (dd-MMM-yyyy - dd-MMM-yyyy)

8. Meteorological Instrumentation : No

9. On-Site, Point of Contact Agency Information

Agency Institut de Physique du Globe de Paris

Primary Contact : De Chabaliere Jean-Bernard, Socquet Anne , IPG Paris , France

E-mail : socquet@ipgp.jussieu.fr:

Secondary Contact : Jaime campos DGF Uchile, E-mail : jaime@dgf.uchile.cl

Third Contact : Daniel Carrizo , UCNA Antofagasta

: DGF _ Departamento de Geofisica _ Universidad de Chile France

10. Responsible Agency (if different from 9.)

11. More Information

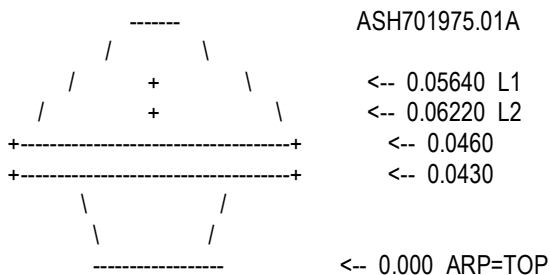
URL for More Information :

Hardcopy on File

Site Map : Site Diagram : Horizon Mask

Monument Description : Site Pictures : Additional Information : (multiple lines)

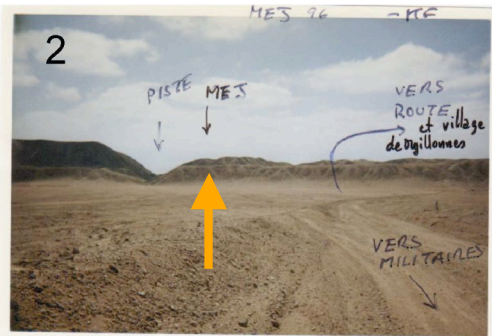
Antenna Graphics with Dimensions



ARP: Antenna Reference Point _ L1 : L1 Phase Center L2 : L2 Phase Center



Upper left view : Cultural Center of the Mejikllones Municipality
Upper right and central views : Geodetic GPS antenna on the top of the building
Lower left view : metallic box with receptor Ashtech ZX and power supply



MEJ0 :

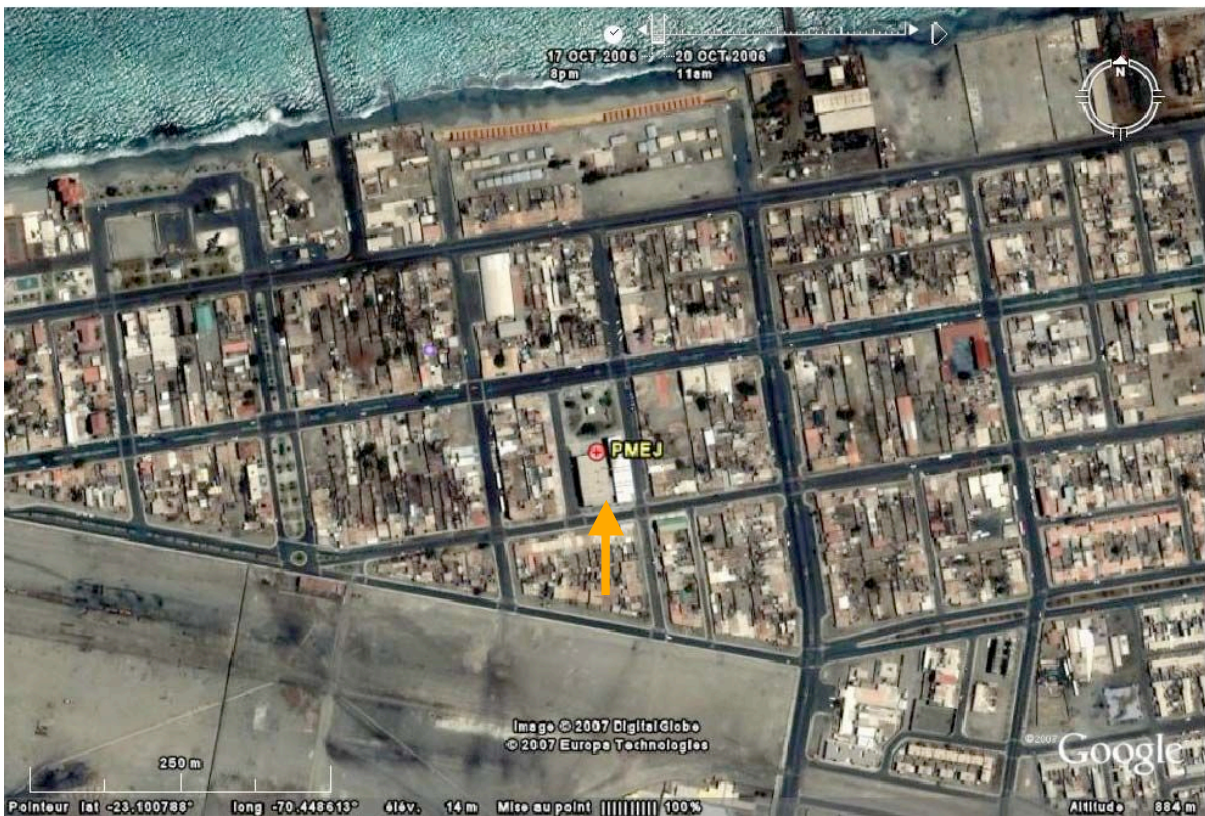
1 - View of the cliff where MEJ0 is located from Mejillones

2 - Acces to MEJ0 from the track between Mejillones and the military basis

3 - MEJ0 is located on a concrete pilar.

repetition GPS point MEJ0 / PMEJ

MEJ0



location of GPS permanent station PMEJ in the Cultural Center of the Mejillones Municipality