

M=6.8 - 27km_NW_Kasiguncu, Indonesia
170529_143521_8w1zB

Mw= 6.8

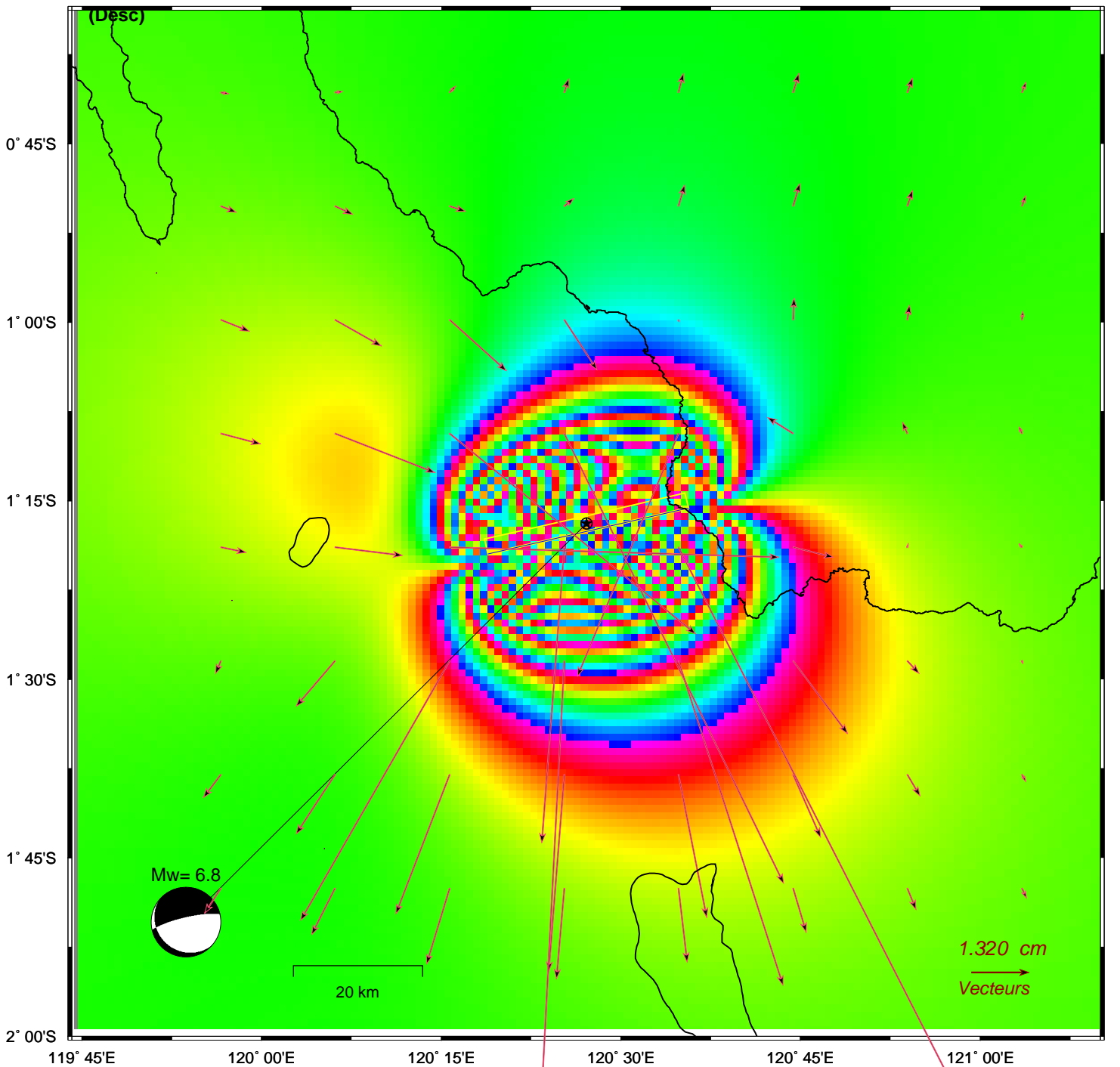
Long. Lat. Depth : 120.452 -1.282 9.1

Azi. Dip Rake : 257 79 -104

Interferogramme theorique - orbites descendantes

170529_143521_8w1zB

- plan nodal : **B**



[gmt_TTT5_x.bat]