

M=6.5 - 36km_W_of_Yongle, China

USGS WMT Moment Tensor

170808_131949_a5x1B

Vecteurs horizontaux et
Amplitude deformation verticale = contours

Composante verticale:

dU min, max: -4 , 4 cm



Mw= 6.5

Long. Lat. Depth : 103.843 33.217 11.5

Azi. Dip Rake : 333 88 9

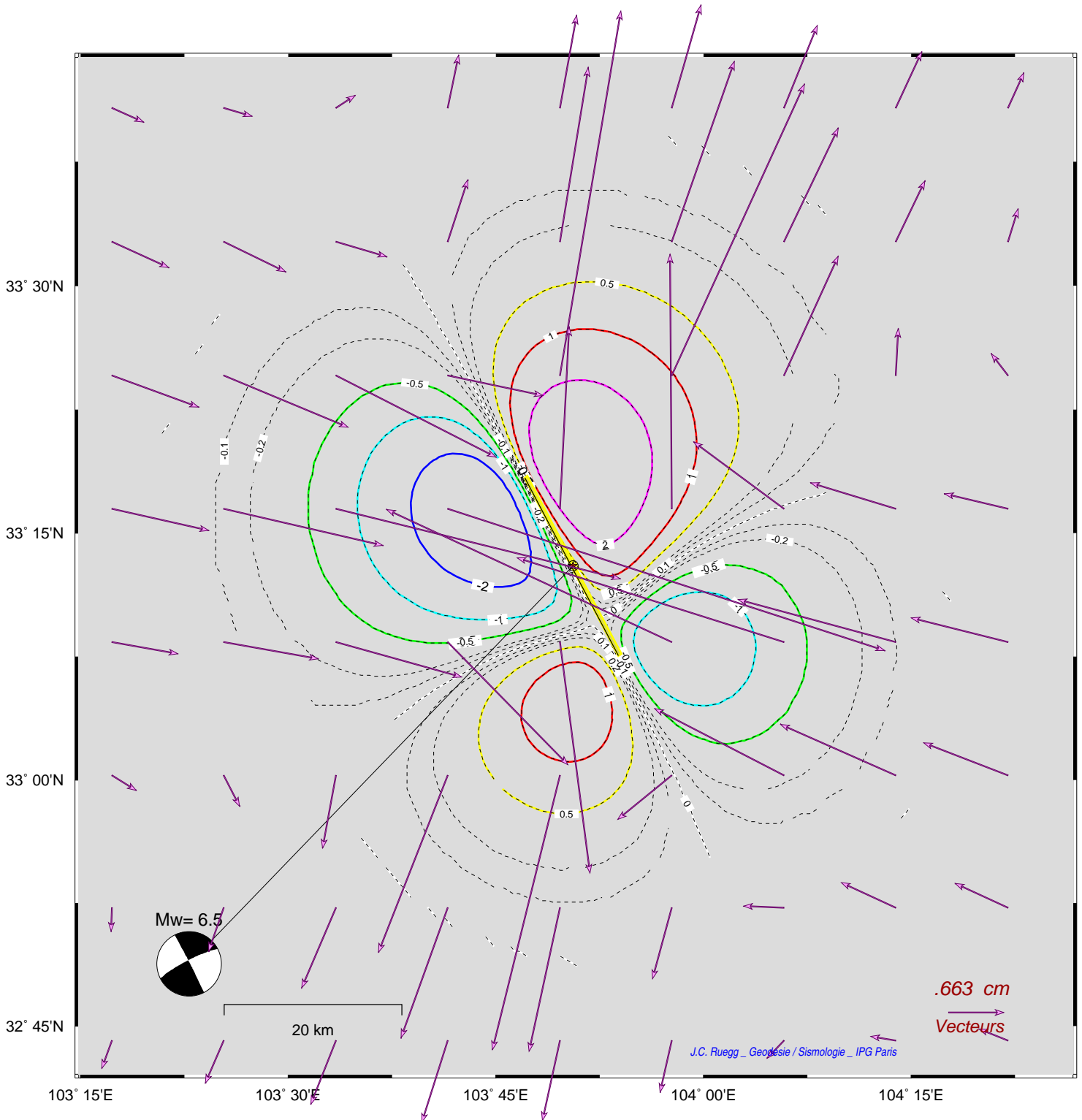
Hmin, Hmax: 7.097 , 15.903 km

slip= .857 m

- plan nodal : B

Amplitude vecteurs:

dV min, max: 0 , 6 cm



.663 cm
Vecteurs

J.C. Ruegg - Geodesie / Sismologie - IGP Paris

/home/ruegg/CMT/FINAL_prg/GMT_JB2.cpt

prog: gmt_TTT5_x.bat