

Mw=7.55 - 91 km SE of Sand Point, Alaska  
201019\_205440\_c9hgA

Mw= 7.55

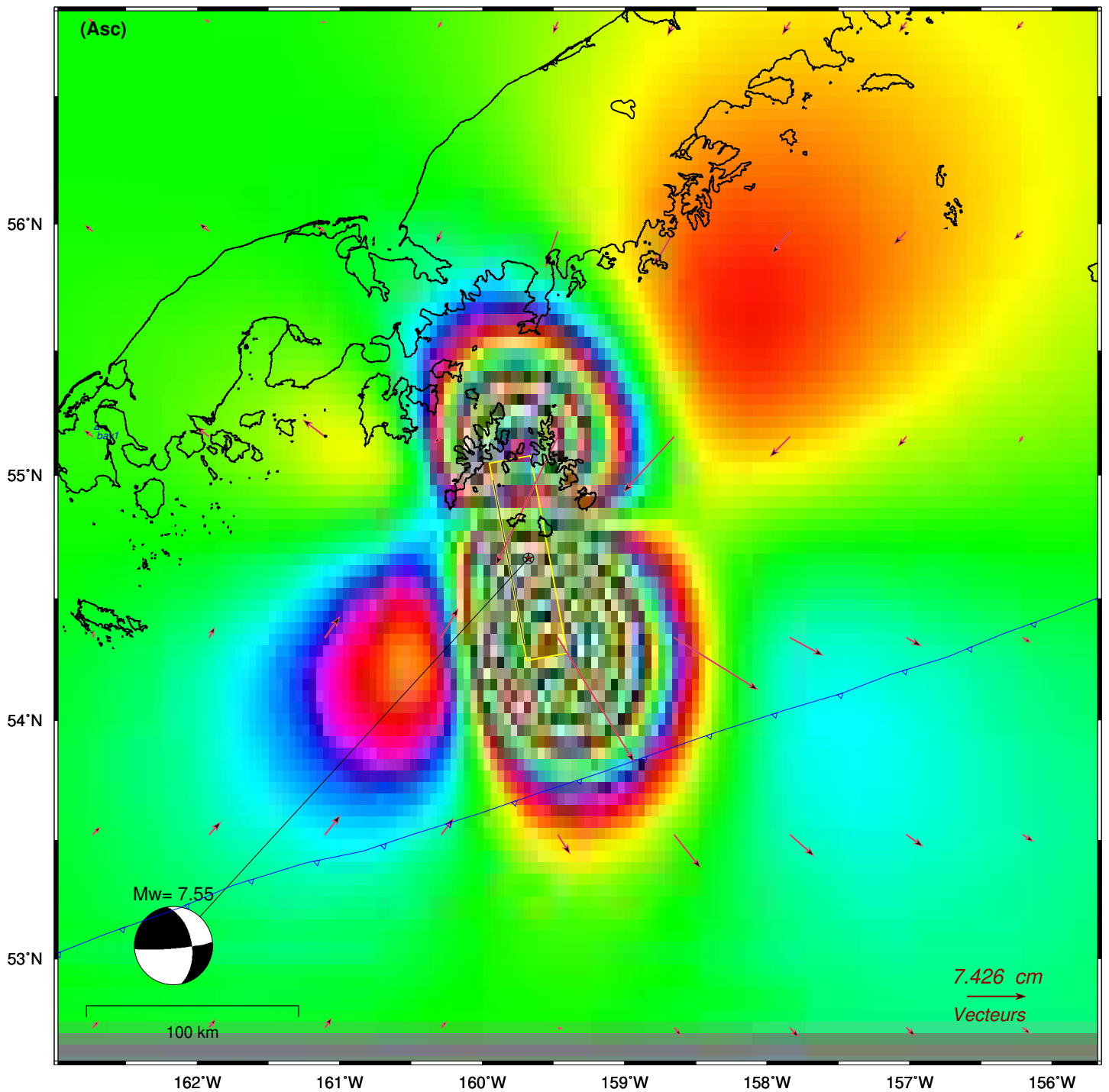
Long. Lat. Depth : -159.675 54.662 40.5

Azi. Dip Rake : 350 52 172

Interferogramme theorique - orbites ascendantes

201019\_205440\_c9hgA

- plan nodal : A



- coef= 2.0

[gmt\_TTT5\_hl.bat]