

Mw=7.26 - 174 km NE of Gisborne, New Zealand
210304_132736_dffIA

Mw= 7.26

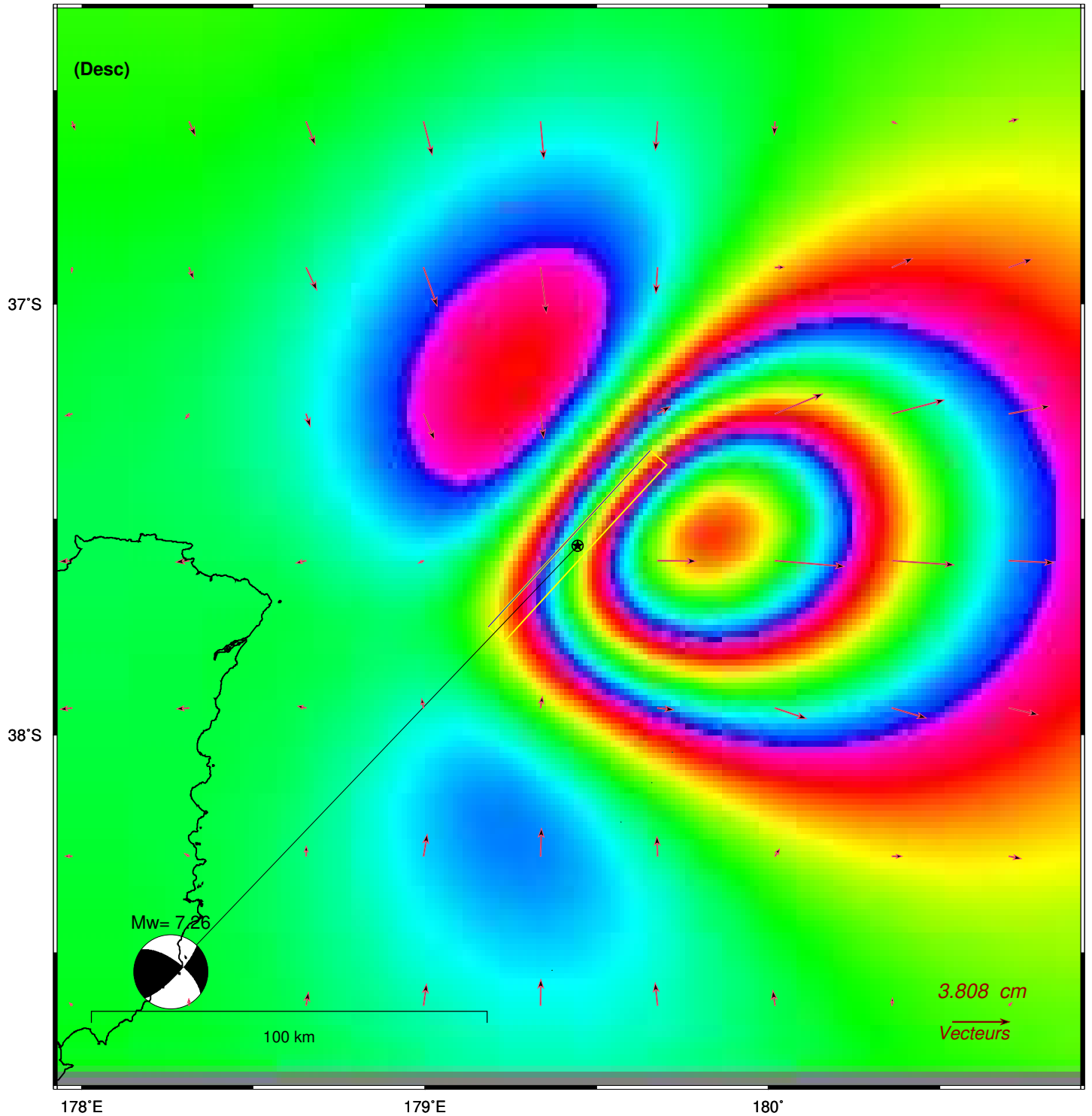
Long. Lat. Depth : 179.444 -37.563 60.5

Azi. Dip Rake : 44 76 26

Interferogramme theorique - orbites descendantes

210304_132736_dffIA

- plan nodal : A



- coef= 1.0

[gmt_TTT5_x21.bat]