

Mw=7.26 - 174 km NE of Gisborne, New Zealand  
210304\_132736\_dffIB

Mw= 7.26

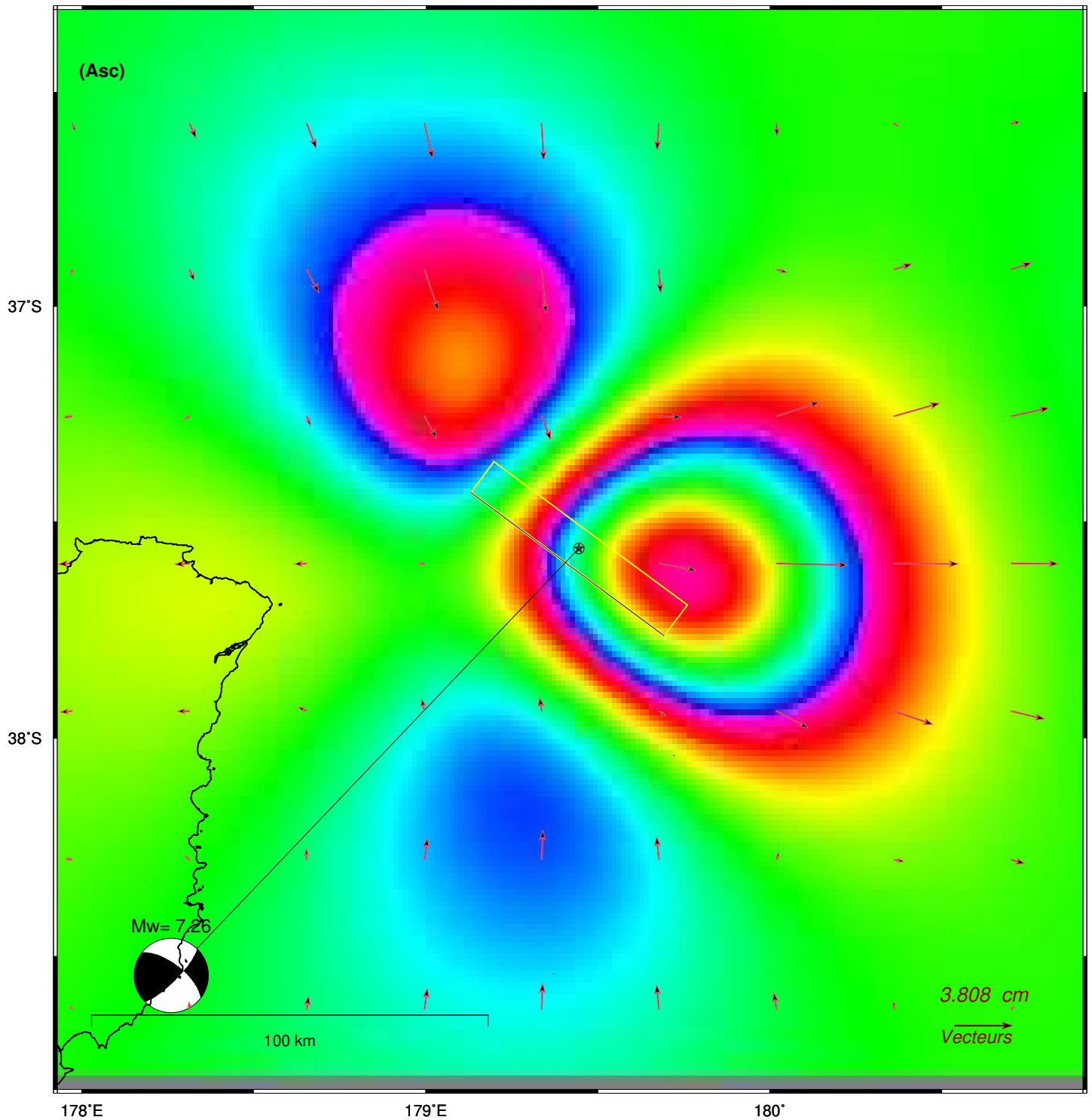
Long. Lat. Depth : 179.444 -37.563 60.5

Azi. Dip Rake : 308 65 165

Interferogramme theorique - orbites ascendantes

210304\_132736\_dffIB

- plan nodal : **B**



- coef= 1.0

[gmt\_TTT5\_x21.bat]