

Mw=7.03 - 27 km ENE of Ishinomaki, Japan  
210320\_090945\_d16yA

Mw= 7.03

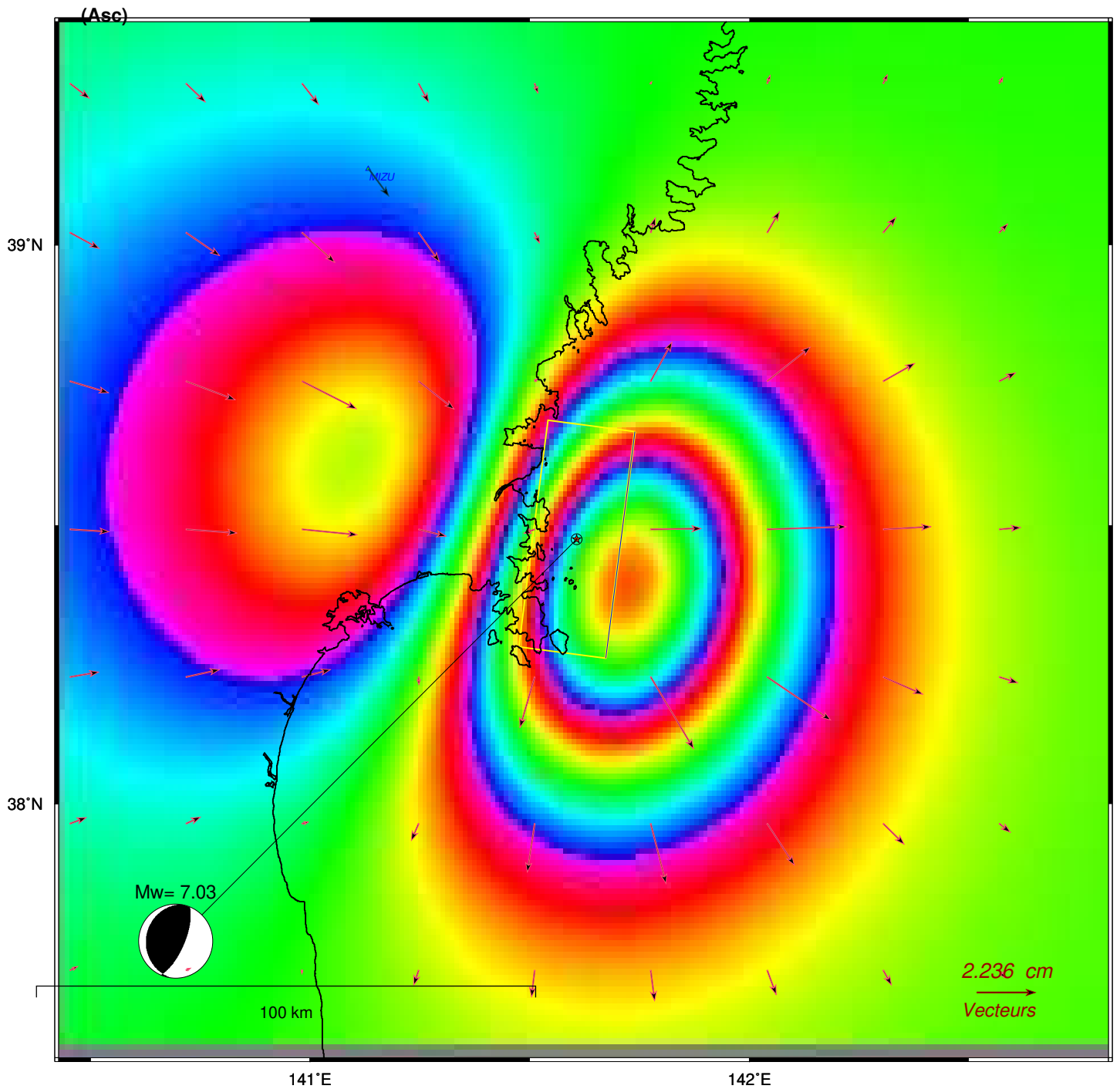
Long. Lat. Depth : 141.607 38.475 50.5

Azi. Dip Rake : 187 21 75

Interferogramme theorique - orbites ascendantes

210320\_090945\_d16yA

- plan nodal : **A**



- coef= 1.0

[gmt\_TTT5\_x21.bat]