

Mw=7.03 - 27 km ENE of Ishinomaki, Japan

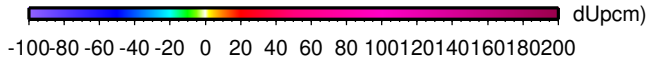
USGS W-phase Moment Tensor

210320_090945_d16yA

Vecteurs horizontaux et
Amplitude deformation verticale = contours

Composante verticale:

dU min, max: -3 , 8 cm



Mw= 7.03

Long. Lat. Depth : 141.607 38.475 50.5

Azi. Dip Rake : 187 21 75

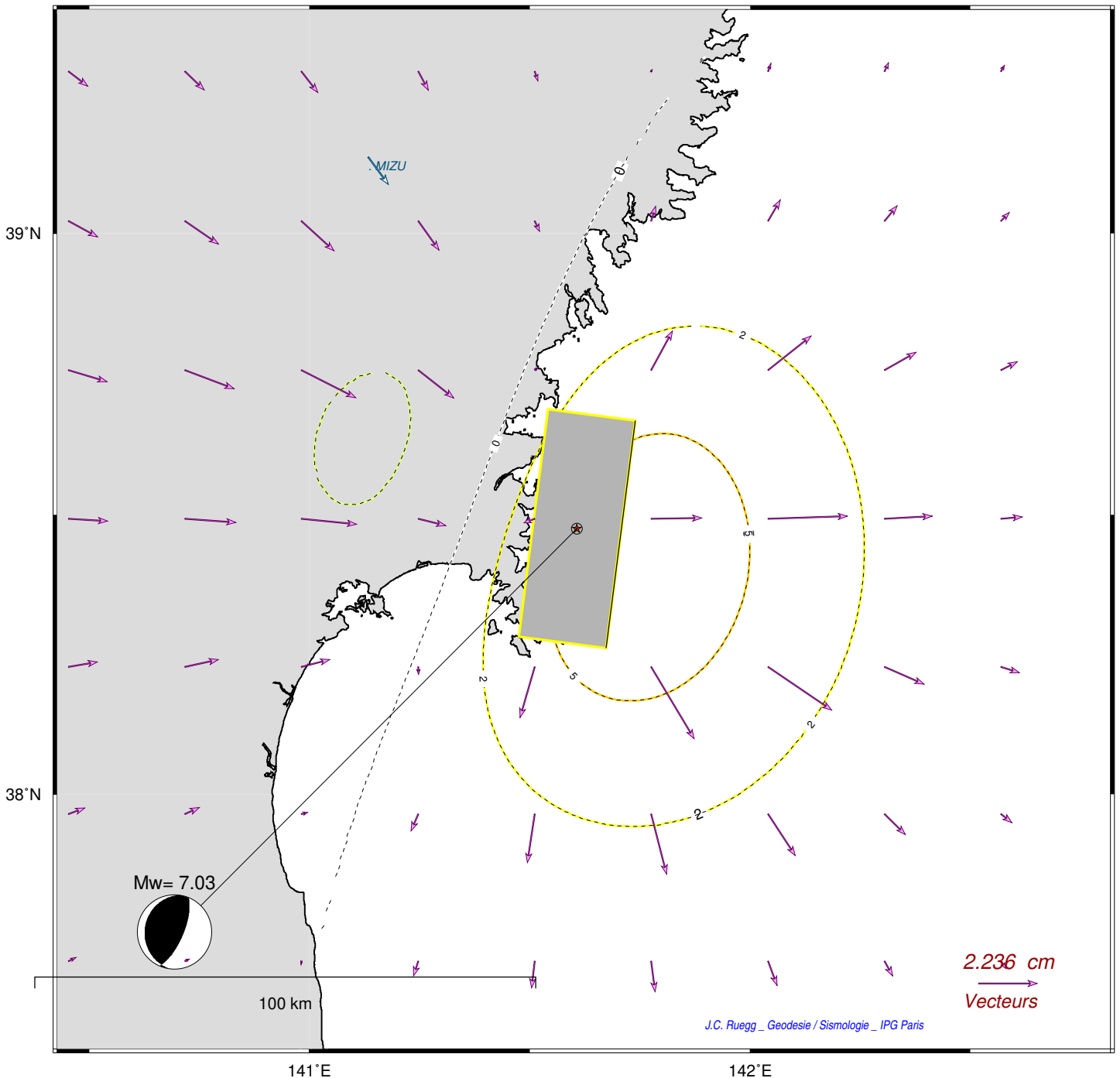
Hmin, Hmax: 47.146 , 53.854 km

slip= 1.250 m

- plan nodal : A

Amplitude vecteurs:

dV min, max: 0 , 4 cm



J.C. Ruegg _ Geodesie / Sismologie _ IPG Paris

/home/ruegg/CMT/FINAL_prg/GMT_JB50.cpt

prog: gmt_TTT5_x.bat