

Mw=7.02 - 23_km_WNW_of_Port-Olry,_Vanuatu
230108_123242_j2ywA

Mw= 7.02

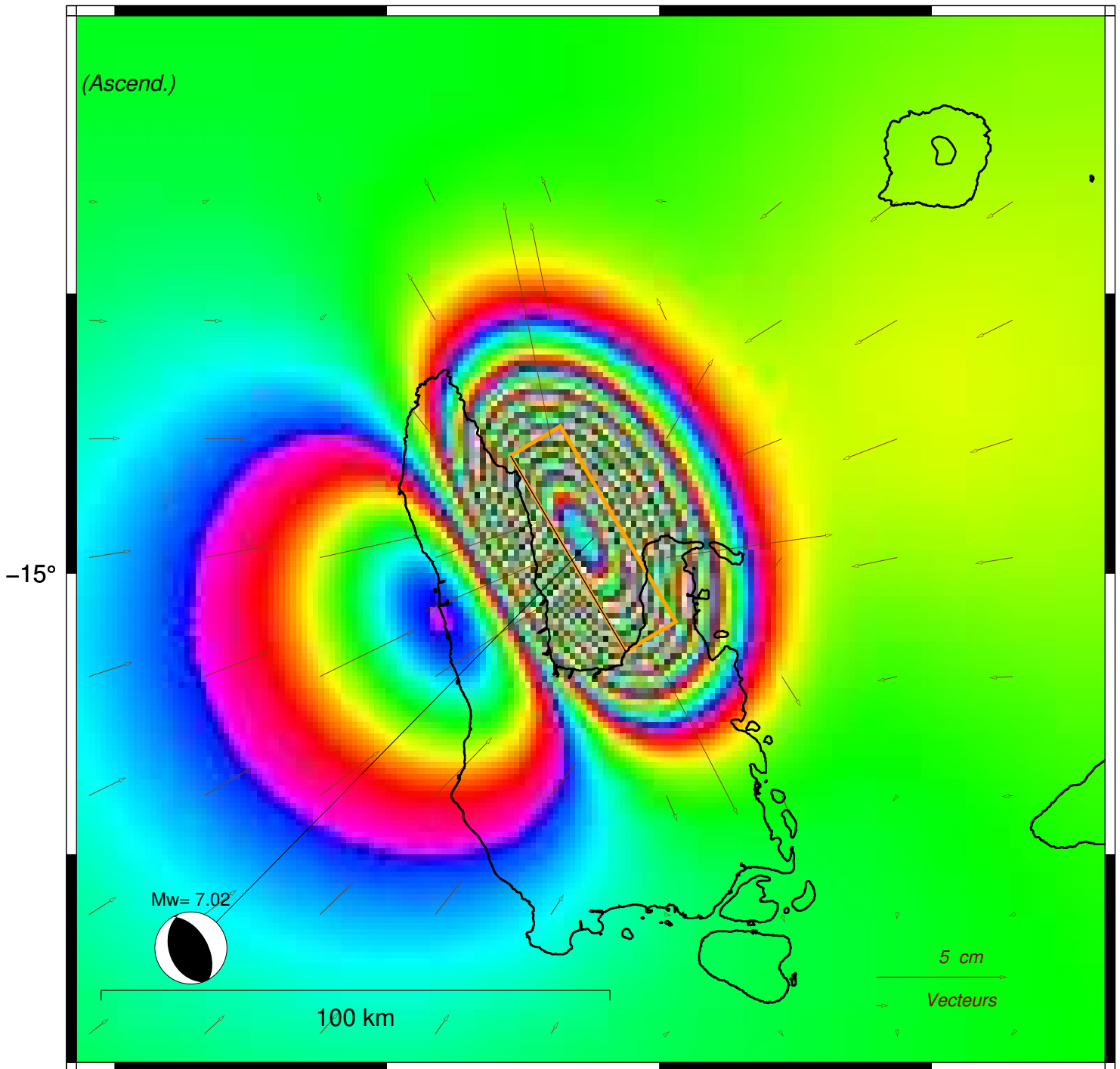
Long. Lat. Depth : 166.878 -14.938 23.5

Azi. Dip Rake : 330 52 83

Interferogramme theorique - orbites Ascendantes

230108_123242_j2ywA

- plan nodal : A



-15°

Mw= 7.02

100 km

5 cm

Vecteurs

166°

167°

- coef= 1.0

[gmt_T6_x21.bat]