

Mw=7.02 - 23\_km\_WNW\_of\_Port-Olry,\_Vanuatu  
230108\_123242\_j2ywB

**Mw= 7.02**

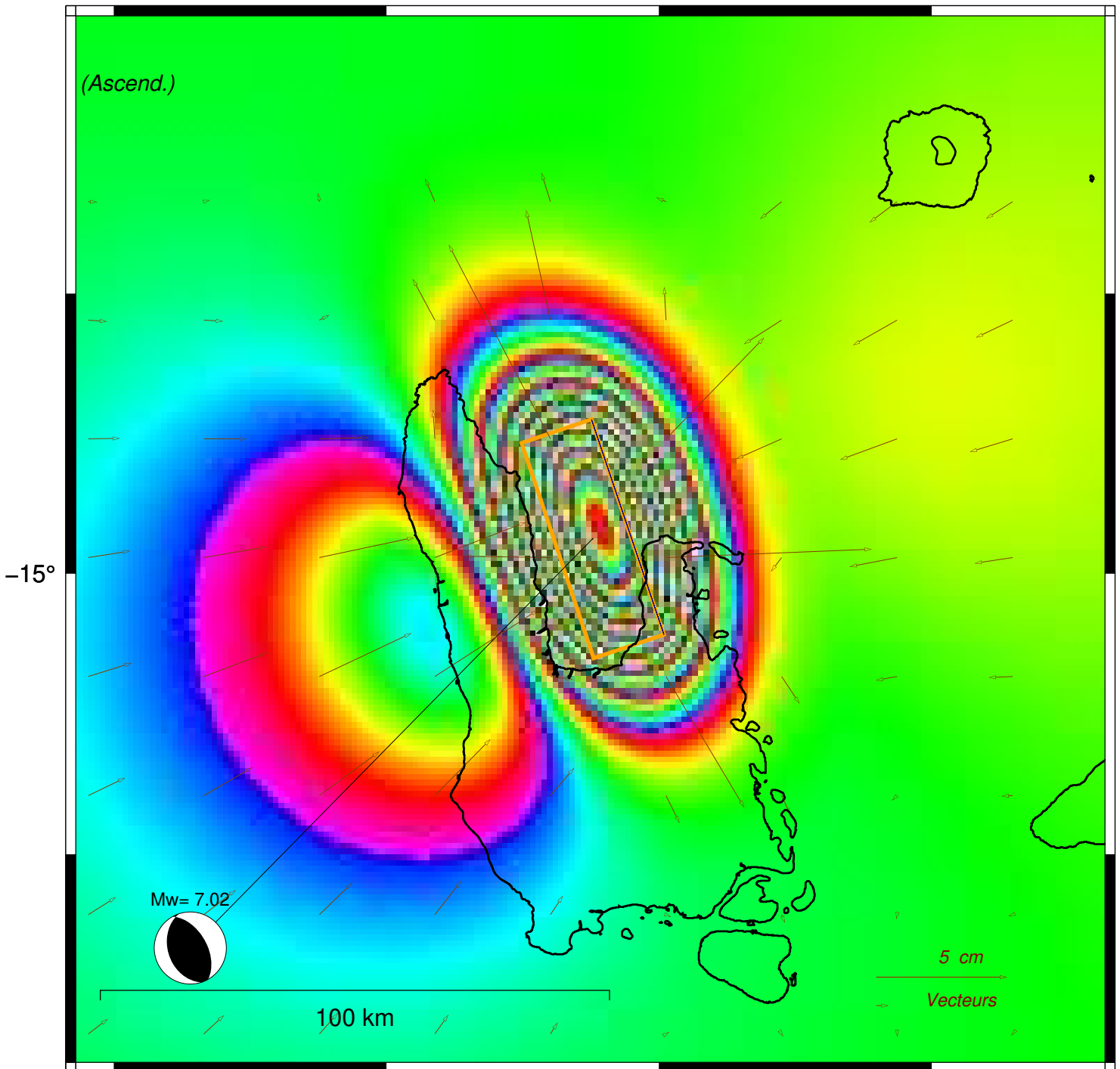
Long. Lat. Depth : 166.878 -14.938 23.5

Azi. Dip Rake : 162 38 99

*Interferogramme theorique - orbites Ascendantes*

230108\_123242\_j2ywB

- plan nodal : B



166°

167°

- coef= 1.0

[gmt\_T6\_x21.bat]